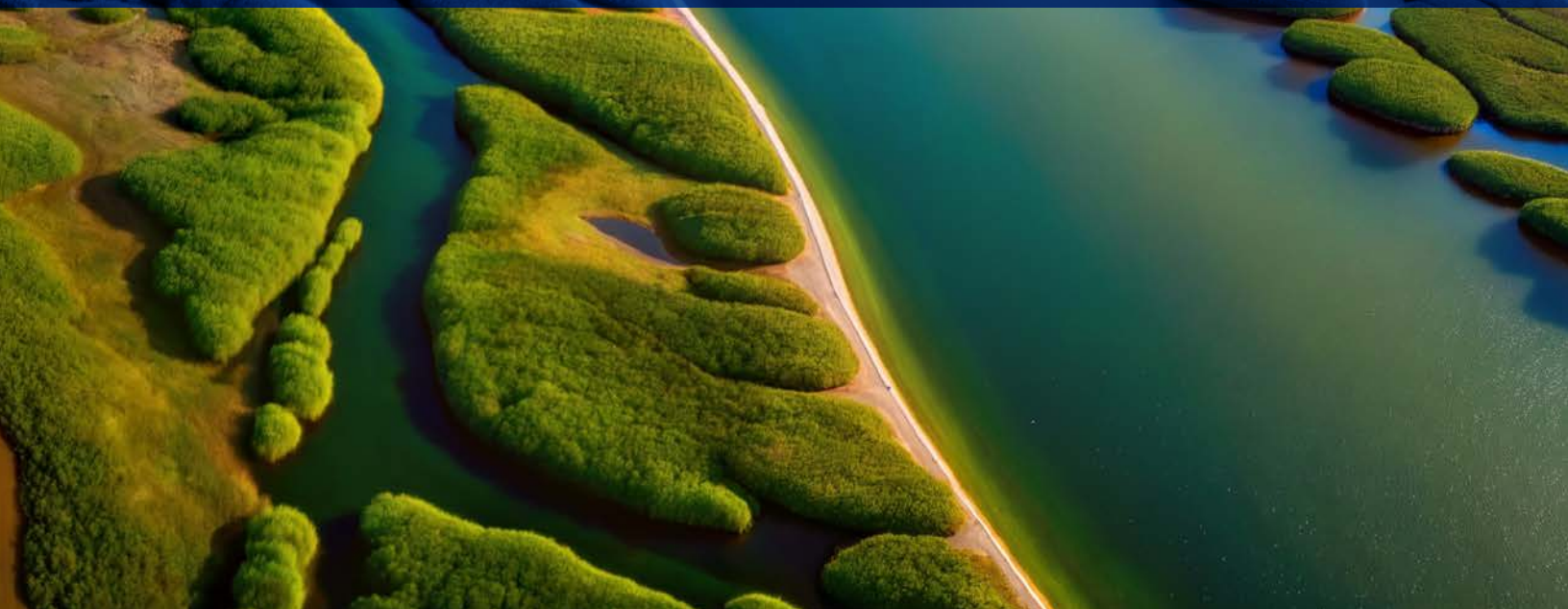




FIVE STREAMS, ONE JOURNEY

2024 Sustainability Report

WESTECH[®]
SWIRE WATER



WESTECH'S DUAL COMMITMENT: MAXIMIZE OUR WELLSPRING, MINIMIZE THE RIPPLE

WesTech creates products and solutions that renew water – an inherently sustainable offering for the markets we serve. Like a wellspring that enables and nourishes life to thrive, our offerings generate many positive environmental and social benefits. Like ripples on the surface of water, our operations create an impact that we have committed to reduce and manage.

This report will use these two terms, "Wellspring" and "Ripple", to frame our benefits and impacts. Wellspring frames the positive benefits we enable for customers and communities, while Ripple will frame our supply chain impacts.

WELLSPRING

Positive Impact

- Clean water delivered to communities
- Quantity of water reused or renewed
- Quality of water improved
- Contaminants removed
- Resources recovered and reused
- Customer energy savings enabled
- Customer emissions reduced
- Ecosystem health restored

RIPPLE

Lifecycle Management

- Energy and water use, waste
- Purchased goods & services
- Capital goods
- Fuel and energy related activities
- Upstream transportation and distribution
- Waste generated in operations
- Business travel and employee commuting
- Upstream leased assets
- Processing of sold products, use of sold products, and end of life treatment of sold products
- Downstream leased assets



The Sustainability currents of environmental stewardship and social responsibility have flown through our company since WesTech opened its doors in 1973, in response to the Clean Water Act.

In 2022, our leadership set industry-leading sustainability targets, and we established a baseline emissions inventory to measure progress. To guide our journey, we organized our strategy into five key topics – Climate, Water, Waste, People, and Communities. In this report, you'll see these topics as five streams that flow through our business and converge for measurable impact.

In 2024, we committed to net zero and submitted our decarbonization pathway to the Science Based Targets initiative (SBTi) to validate our ambition against leading standards. We also extended this commitment to our supply chain and asked suppliers to partner in efforts to reduce emissions and strengthen our shared impact.

This is WesTech's first public sustainability report, and it shows how we are turning our values into measurable action – building momentum in each stream and learning where we can go further, faster. Looking ahead, we endeavor to help our customers achieve their objectives for efficiency and resiliency by innovating and delivering solutions that lower costs and reduce risk. I look forward to what we will accomplish next, and I am grateful to pursue these worthy goals with such a talented and passionate group of people.

Sincerely,

Steven Klekas, P.E., MBA
Vice President, Sustainability

TOP ACCOMPLISHMENTS IN 2024



Science-based targets commitment and submission to SBTi for validation



Product carbon footprint assessment for primary product line



Equipment upgrades, rooftop solar, and LED lighting



Cooling tower upgrades and Waterwise landscaping



Offset all business air travel



Offset direct water withdrawals with replenishment projects in critical watersheds



Installed electric vehicle (EV) charging at primary facilities



HVAC controls optimization



Launched companywide volunteer program supporting communities we operate in



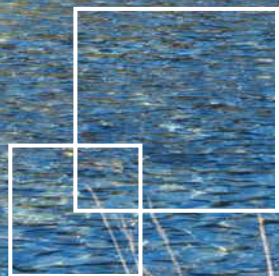
Completed company's largest ever volunteer project



THE CLIMATE STREAM

Flowing Downward: Reducing Our Carbon Footprint

Managing climate risk is essential for business and community resilience. We are acting today to protect our climate and enhance long-term benefits for our customers, our people, and our communities for generations to come.



SETTING BOLD AMBITIONS

In 2024, we set goals to reach net-zero before 2050, Scope 1 and 2 carbon neutrality before 2030, and 100% renewable electricity by 2030. To validate and strengthen our commitment, we submitted our targets to the Science Based Targets Initiative (SBTi), making these commitments public and accountable.



Our Destination

- Net-zero by 2050
- Scope 1 & 2 carbon neutrality by 2030
- 100% renewable electricity by 2030
- SBTi-validated targets

Charting the Course Ahead

Our biggest opportunities lie ahead. As we improve carbon transparency in our products and financial processes, we are identifying and screening hot spots to find where the biggest improvements and impact can be realized.

Through comprehensive footprint assessments and supplier engagement, we are tackling our indirect emissions, focusing on product enhancements and supply chain efficiency to realize the greatest impact.



45% SCOPE 1 REDUCTION via fleet overhaul (adding EVs and hybrids, fleet reductions, and fuel efficiency improvements)



TWO ROOFTOP SOLAR SYSTEMS implemented



SBTi TARGETS SUBMITTED and third-party verified

46%

Scope 2 reduction through renewable electricity + efficiency measures





THE WATER STREAM

Renewing Water, Restoring Balance

Water is essential for life, and access to safe water and sanitation is a fundamental human right. WesTech provides clean water products and solutions that deliver lasting environmental benefits and help communities around the world thrive.

LOWERING OUR WATER IMPACT WHERE IT MATTERS MOST

Our commitment includes returning 100% of the water used in our operations safely to the environment. We are committed to achieving water neutrality in our operations, and in 2024, implemented a program to balance direct water use through volumetric water replenishment projects in critical watersheds to support healthy ecosystems and vibrant communities.



Our Commitment

In 2024, we restored the balance of operational water withdrawals in critical watersheds. We replenished over 100% of our total operational withdrawals back into the critical watersheds we operate.

Helping Customers Flow Sustainably

Our products and solutions renew billions of gallons of water daily. We are helping our customers treat and reuse water, and in the process reduce greenhouse gas emissions associated with water and wastewater treatment. Water treatment is inherently energy intensive and can consume 30-40% of a municipalities energy use, and up to 70% of a wastewater treatment plant's (WWTPs) operating cost. By offering sustainable technologies like our electro-biochemical reactors (EBR), low-energy thickeners, and DuoSphere biogas reclamation products, WesTech provides the products and solutions our customers need to realize positive outcomes.



100% REPLENISHMENT of withdrawals back into critical watersheds



NATIVE PLANT LANDSCAPING and efficient HVAC upgrades



FLOW RESTORATION PARTNERSHIP from Jordan River to Farmington Bay

53%

reduction in our operational water use





THE WASTE STREAM

Transforming Waste Into Resource

WesTech seeks ways to turn today's waste into tomorrow's resource.



RECOVERING VALUE TO REDUCE DEPENDENCE ON RAW MATERIALS

When waste can be reused or when valuable resources can be recovered, we reduce our reliance on finite resources and eliminate the intensive processes associated with raw material extraction.

Not only do our products help our customers reuse or recover valuable materials, we also are implementing ways to do this inside our operations. We segregate critical waste streams to divert waste from the landfill and are committed to continually minimizing the amount of waste we generate.



Our Vision

Zero waste to landfill by 2050, turning today's waste into tomorrow's resource through innovation and circular thinking.

Innovation in Action

- Cardboard perforator converts scrap to packaging fill
- Laser cutting table: 75% steel utilization efficiency
- Plastic water bottles eliminated from offices
- Reducing single use plastics in food waste



5 NEW RECYCLING STREAMS

tracked (e-waste, food, metals, wood, chemical totes)



38.5 TONS of chemical totes recycled



7.33 TONS of wood pallets recycled



1,570 LBS of food waste converted to bioenergy

49%

of waste diverted from landfill

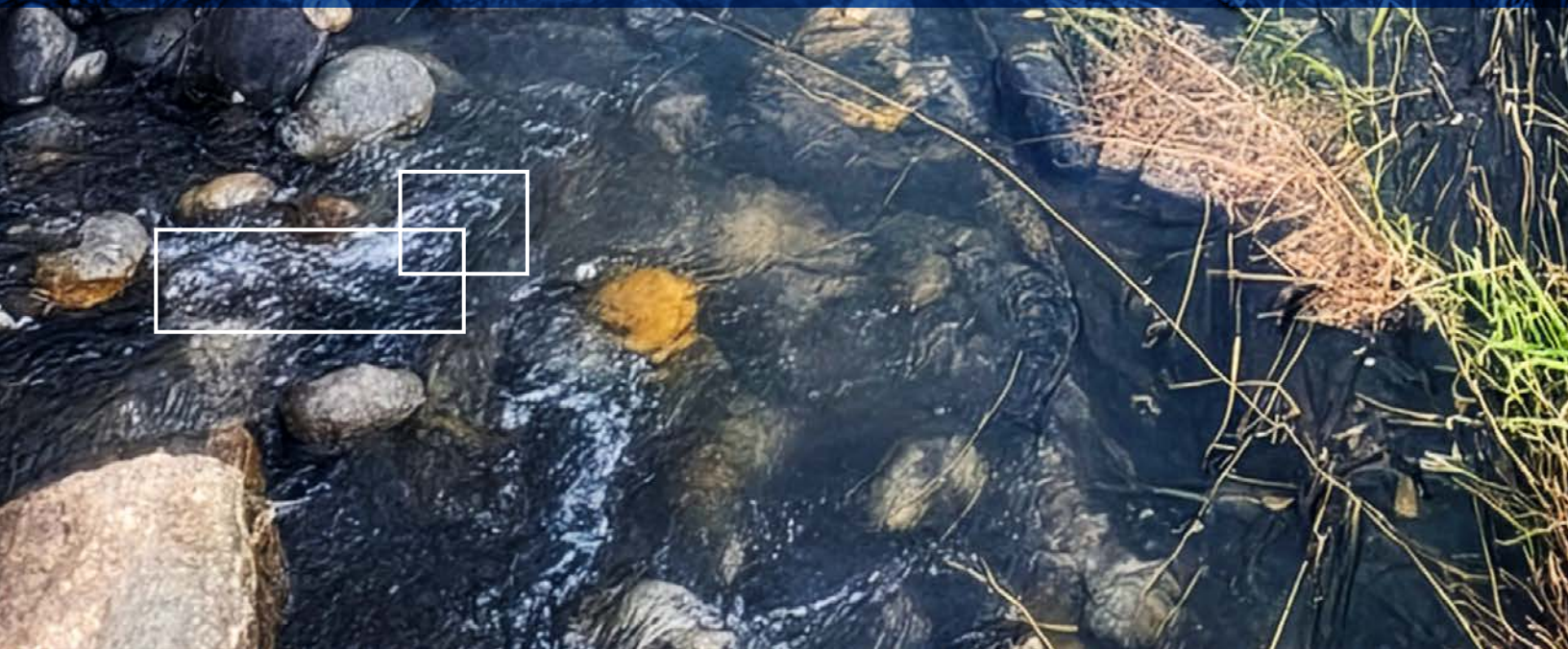




THE PEOPLE STREAM

Diverse Currents, United Flow: Investing in Our People

We aim to create a workplace where our people can realize their potential and contribute fully to renewing water and helping communities thrive.



2024 PROGRESS

INVESTING IN OUR PEOPLE TO FOSTER A STRONGER, MORE DIVERSE FUTURE

WesTech provides professional and personal development resources, and critical benefits for working parents. In 2024, we launched a women's leadership initiative. A diverse workplace helps improve strength, collaboration, and innovative thinking within our company.



Our Foundation

Our people are the lifeblood of our sustainability journey. Our THRIVE Task Force is comprised of people across the company, representing our various functions and locations. This task force is essential to help us implement sustainable practices and provides valuable feedback to align our program with what is most important to our people.

Building Tomorrow's Leaders

Professional development opportunities, transparent communication, and adherence to our Human Rights policy and Code of Conduct ensure ethical operations aligned with our values values.



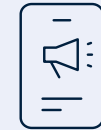
IMPROVED ENGAGEMENT SCORES

across all survey categories (628 employees)



34 EMPLOYEES

in continuing education programs



74 SUSTAINABILITY ISSUES

reported through new Mobile Safety App



FLEXIBLE POLICIES

for work and parental leave

THRIVE TASK FORCE

supports sustainability events, volunteering, and community donations

18

members



4

sites





THE COMMUNITY STREAM

When Communities Thrive, We Thrive

Community is not separate, it is core to our business.



STRONG COMMUNITIES POWER LONG-TERM SUCCESS

In 2024, we set the ambitious goal to volunteer more than 2,024 hours and donate access to clean water to over 6,000 people who previously lacked access to safe drinking water. On average, our people volunteered 4 hours each and donated to our Community THRIVE Fund. The Community THRIVE Fund is 100% matched by the company and it helped deliver clean water and sanitation projects to communities most in need.



Community THRIVE in Action

We engage communities with compassion and meaningful partnerships. Through our Community THRIVE Fund, 100% of donations flow directly to those who need it most—providing clean water, education, and essential services.

Ripple Effects

Our partnerships with nonprofits help us understand community challenges and create lasting change—from water access to habitat restoration to food security.



6,000+ PEOPLE now have water access via new wells in Africa (WHOLives partnership)



100+ EMPLOYEES restored Jordan River Migratory Bird Refuge habitat (Jordan River Commission partnership)



22% INCREASE in the number of employees contributing to the THRIVE fund



2,024+ HOURS VOLUNTEERED by Swire Water employees

40+ charitable organizations supported by volunteers in 2024





PRODUCT HIGHLIGHTS

We aim to maximize the wellspring of positive impacts our products and solutions bring to the market while simultaneously managing the ripple effects associated with our operations. This strategy seeks to ensure we are always creating a positive overall impact that will help our customers and the communities we operate in, thrive long into the future.

SUSTAINABILITY IN ACTION: SYNTHETIC DIAMOND BEARINGS UPGRADE

Sustainability often means making decisions today that create long-term value. In 2024, we replaced standard grease bearings in our ExtremeDuty Sludge Mixers with synthetic diamond bearings. This simple change creates substantial savings for our customers and the community by eliminating consumable grease, minimizing downtime, and greatly improving the expected lifetime and reliability of the product.



Wellspring Benefits

- Eliminates consumable grease waste
- Reduces customer downtime & maintenance costs
- Extends equipment lifetime (reducing replacement frequency)

Ripple Considerations

- Higher upfront embodied carbon in diamond materials
- Manufacturing energy investment
- Overall lifecycle benefit: Positive (extended life > initial impact)

3x

longer life span
of synthetic
diamond bearings
vs. standard
greased bearings



ACCELERATING AMAZON REFORESTATION: DEWATERING SOLUTIONS



South America contains 40% of the world's tropical forests, serving as critical carbon sinks essential for global climate stability. In Brazil, bauxite mining is a process for producing aluminum, an important and recyclable metal used in construction, solar panels, electrical wiring, machinery and many other components. The mining of this critical metal can often take place in tropical forests.

In a technical white paper titled "How Paste Thickening of Bauxite Tailings Redefines Tailings Storage," WesTech details a recent project and the sustainability benefits associated with our paste thickeners. WesTech's paste thickener technology offers an innovative solution for reclaiming bauxite mine residuals and creating reusable soil for faster reforestation while also recovering up to 80% of the water used in this process.

Wellspring Benefits

- Enabled land reclamation and reforestation
- Increased water recovery and reduced tailings dams
- Reduced long-term environmental risk

Ripple Considerations

- Higher energy and equipment intensity
- Ongoing land and deposition management
- Benefits depend on strong operations and rehabilitation

Up to
80%
recovery of water
used in this process



SCOPE 1, 2, & 3 EMISSIONS

	Units	2022	2023	2024
DIRECT ENERGY EMISSIONS (GHG, SCOPE 1)	<i>mtons/CO2e</i>	2,528	2,462	1,563
INDIRECT ENERGY EMISSIONS (LOCATION-BASED) (GHG, SCOPE 2)				
Electricity	<i>kWh</i>	2,875,374	2,355,674	1,393,344
Self Generated Solar Renewable Electricity Used	<i>kWh</i>	N/A	N/A	78,869
Green Tariff	<i>kWh</i>	N/A	N/A	163,245
(Location Based) Electricity	<i>mtons/CO2e</i>	930	754	342
(Market Based) Electricity	<i>mtons/CO2e</i>	897	841	329
SCOPE 3 EMISSIONS				
Category 1 – Purchased Goods and Services	<i>mtons</i>	22,132	26,305	25,640
Category 2 – Capital Goods	<i>mtons</i>	2,703	1,083	1,598
Category 3 – Fuel and Energy Related Activities	<i>mtons</i>	1,050	801	640
Category 4 – Upstream Transport and Distribution	<i>mtons</i>	3,363	7,249	8,253
Category 5 – Waste Generated in Operations	<i>mtons</i>	166	187	209
Category 6 – Travel	<i>mtons</i>	1,939	1,709	1,746
Category 7 – Employee Commuting	<i>mtons</i>	3,372	2,779	2,419
Category 8 – Upstream Leased Assets			<i>Immaterial</i>	
Category 9 – Downstream Transport and Distribution			<i>Included in Cat 4</i>	
Category 10 – Processing Sold Products			<i>Immaterial</i>	
Category 11 – Use of Sold Products	<i>mtons</i>	191,334	148,599	132,227
Category 12 – End of Life Treatment of Sold Products	<i>mtons</i>	1,351	1,117	1,106
Category 13 – Downstream Leased Assets	<i>mtons</i>	17,872	7,250	8,076
Category 14 – Franchises			<i>Immaterial</i>	
Category 15 – Investments			<i>Immaterial</i>	
TOTAL SCOPE 1	<i>mtons/CO2e</i>	2,528	2,462	1,563
TOTAL SCOPE 2 (Location Based)	<i>mtons/CO2e</i>	930	709	448
(Market Based)	<i>mtons/CO2e</i>	897	754	449
TOTAL SCOPE 3	<i>mtons/CO2e</i>	245,282	197,078	181,915
TOTAL GHG FOOTPRINT	<i>mtons/CO2e</i>	248,740	200,381	183,808



CONFLUENCE & LOOKING AHEAD

Where Five Streams Meet: The Journey Continues



2024: A WATERSHED YEAR



This year marked critical milestones across all five streams – from SBTi submission to significant progress in water. Each stream strengthened the others, proving that integrated sustainability creates momentum.

Our Commitment

We believe our long-term success is deeply rooted in renewing water, protecting the environment, supporting our people, and strengthening communities. As we flow forward, we remain committed to creating lasting value for our customers, our people, and our planet.

2025

Equipment manuals with efficiency guidance

Expanded product carbon footprint assessments, product energy efficiency improvements.

2030

100% renewable electricity

Scope 1&2 carbon neutrality

2050

Net-zero emissions

Zero waste to landfill